

MINI TILTING CONTAINER TYPE MGU

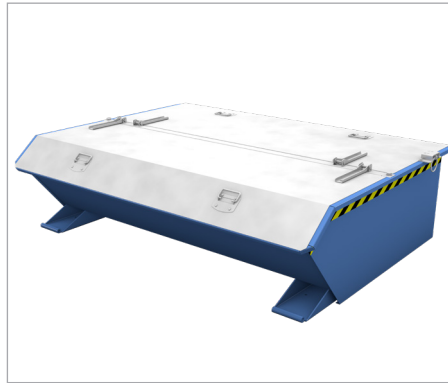


Extremely low construction height. Ideal for use under a machine.

- height dumping edge 350 mm
- ideal angle for emptying
- can be emptied at any height by cable operated from the driver's seat
- body with all-round reinforced edging
- sturdy frame with fork sleeves
- can be secured to prevent slipping and unintentional emptying
- wheels can be fitted later



MGU with castors



MGU with lid

Accessories

- 2 swivel + 2 fixed polyamide castors Ø 100 mm, one swivel castor with brake – construction height 125 mm
- galvanized lid, can be opened from both sides
- welding, oil- and watertight
- Note: other sizes available (please refer to pages 13 and 32, GU and SGU)

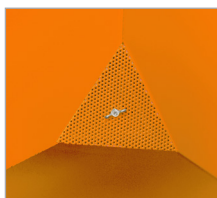
	Volume (approx.) in m ³	Dimensions in mm (l x w x h)	Height dumping edge in mm	Load capacity in kg	Weight in kg (painted/galv.)
MGU 230	0,23	1385 x 680 x 450	350	750	84 / 90
MGU 270	0,27	1385 x 780 x 450	350	1000	96 / 103
MGU 460	0,46	1385 x 1280 x 450	350	1000	120 / 129
MGU 610	0,61	1385 x 1680 x 450	350	1000	138 / 148

	Fork sleeve inside dimensions in mm		
	A	B	C
MGU 230	10	200	60
MGU 270	150	200	60
MGU 460-610	495	200	60

MINI SWARF CONTAINER TYPE SMGU



1" drain-cock



Perforated corner sieve



SMGU with castors

Extremely low construction height. Ideal for use under cutting machines that create swarf.

- perforated sieve and 1" drain-cock designed to separate liquids from solids and drain them
- welding, oil- and watertight
- height dumping edge 350 mm
- ideal angle for emptying
- can be emptied at any height by cable operated from the driver's seat
- body with all-round reinforced edging
- sturdy frame with fork sleeves
- can be secured to prevent slipping and unintentional emptying

Accessories

- 2 swivel + 2 fixed polyamide castors Ø 100 mm, one swivel castor with brake – construction height 125 mm
- galvanized lid, can be opened from both sides

	Volume approx in m ³	Dimensions in mm (l x w x h)	Height dumping edge in mm	Load capacity in kg	Weight in kg (painted/galv.)
SMGU 230	0,23	1385 x 680 x 450	350	750	85 / 91
SMGU 270	0,27	1385 x 780 x 450	350	1000	97 / 104
SMGU 460	0,46	1385 x 1280 x 450	350	1000	121 / 130
SMGU 610	0,61	1385 x 1680 x 450	350	1000	139 / 149

Fork sleeve inside dimensions		
Please see above (MGU)		

Finish:	RAL 2000	RAL 3000	RAL 5012	RAL 6011	RAL 7005	hot-dip galvanized
----------------	-----------------	-----------------	-----------------	-----------------	-----------------	---------------------------