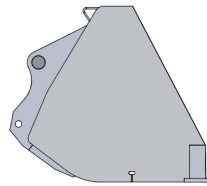
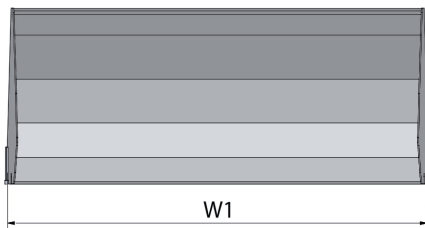
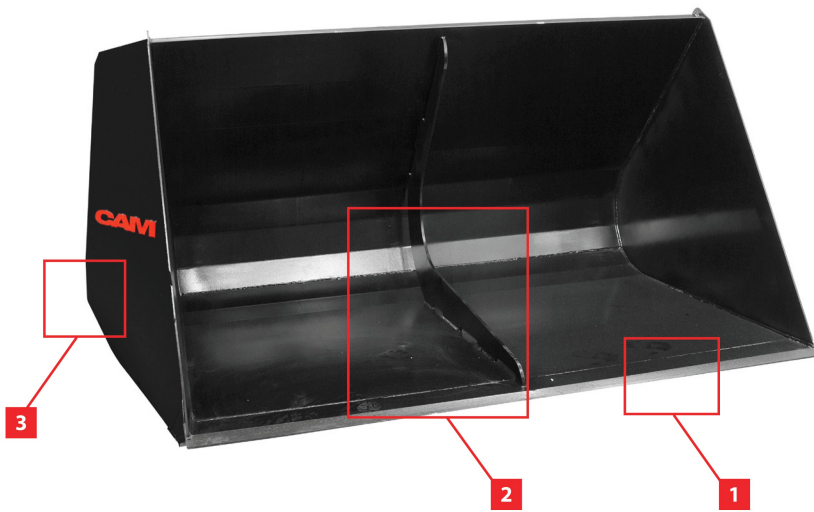
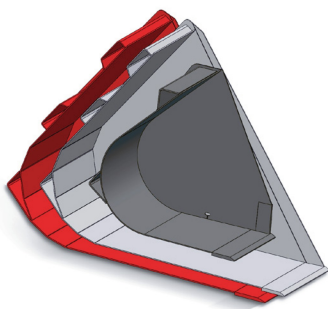


# Loading buckets



## Different models available



- Bucket 2580 l - 2750 l volume  
General bucket
- Bucket 1930 l - 2350 l volume  
General bucket
- Bucket 500 l - 1160 l volume  
Digging bucket

The carefully thought-out design of our buckets resulted in a conical shape. This saves you space when you transport your attachments. The quality welding ensures your bucket will be durable for many years to come.

Today, the bucket range at CAM attachments is still growing. With an extensive range of different capacities and connections for Dieci, Euro, Genie, JCB, JLG, Manitou and Merlo, you're sure to find the bucket you need.

## Characteristics

1. Reinforced steel blade to increase resistance to wear.
2. Reinforcement rib inside the bucket to prevent warping.\*
3. High-quality welding for optimal durability.
4. The conical shape makes it easy to fill and completely empty the bucket.
5. Wear strips along the bottom of the bucket protect the underside of the attachment.
6. Curved reinforcement profiles give the bucket extra strength and resilience.
7. Profiled side plates for greater strength.
8. Extremely durable cutting edge: 500HB hardness.

\*Valid only for the buckets starting from 2000 l volume

### Medium-load capacity

recommended for machines with **50-100 hp engines**



### Heavy-load capacity

recommended for machines with **100-200 hp engines**





## Technical details

Suitable for Genie	Suitable for JCB Q-fit	Suitable for JLG*	Suitable for Manitou	Suitable for Merlo ZM2	Suitable for Merlo ZM3***	Suitable for Dieci* 2800kg < 4500kg	Suitable for Dieci* 2500kg	Suitable for Euro*	Bucket width W1	Volume	Capacity	Load capacity	Max capacity	RRP
									mm	l	m <sup>3</sup>	kg/m <sup>3</sup>	kg	euro
<b>Medium-load capacity buckets - recommended for machines with 50–100 hp engines</b>														
CC16504	CC16502	CC16506	CC16498**	CC16500**	-	-	CC28094	CC31040	1850	500	0,64	1600	1025	<b>1080</b>
CC16462	CC16444	CC16470	CC16390	CC16398	CC16406	CC28096	-	CC31042	1900	900	1,08	1600	1725	<b>1280</b>
CC16464	CC16446	CC16472	CC16392	CC16400	CC16408	CC28098	-	CC31044	2100	990	1,2	1600	1925	<b>1350</b>
CC16466	CC16448	CC16474	CC16394	CC16402	CC16410	CC32046	-	CC31046	2300	1090	1,33	1600	2120	<b>1430</b>
CC16468	CC16450	CC16476	CC16396	CC16404	CC16412	CC28100	-	CC31048	2450	1160	1,42	1600	2270	<b>1500</b>
CC16478	CC16452	CC16484	CC16420	CC16414	CC16426	CC28102	-	CC31050	1900	1930	2,33	950	2210	<b>1900</b>
CC16480	CC16454	CC16486	CC16422	CC16416	CC16428	CC28104	-	CC31052	2100	2140	2,6	950	2470	<b>2000</b>
CC16482	CC16456	CC16488	CC16424	CC16418	CC16430	CC28106	-	CC31054	2300	2350	2,88	950	2730	<b>2140</b>
CC16490	CC16458	CC16494	CC16436	CC16432	CC16440	CC28108	-	CC31056	2300	2580	3,14	900	2820	<b>2280</b>
CC16492	CC16460	CC16496	CC16438	CC16434	CC16442	CC28110	-	CC31058	2450	2750	3,36	900	3020	<b>2430</b>
<b>Heavy-load capacity buckets - recommended for machines with 100–200 hp engines</b>														
CC02710	CC02728	CC02746	CC02764	CC02782	CC16564	CC28112	-	CC31060	1900	900	1,08	2150	2322	<b>1540</b>
CC02712	CC02730	CC02748	CC02766	CC02784	CC16566	CC28114	-	CC31062	2100	990	1,2	2150	2580	<b>1610</b>
CC02714	CC02732	CC02750	CC02768	CC02786	CC02796	CC28116	-	CC31064	2300	1090	1,33	2150	2860	<b>1680</b>
CC02716	CC02734	CC02752	CC02770	CC02788	CC02798	CC28118	-	CC31066	2450	1160	1,42	2150	3053	<b>1750</b>
CC02718	CC02736	CC02754	CC02772	CC02790	CC16568	CC28120	-	CC31068	1900	1930	2,33	1150	2680	<b>2180</b>
CC02720	CC02738	CC02756	CC02774	CC02792	CC16570	CC28122	-	CC31070	2100	2140	2,6	1150	2990	<b>2250</b>
CC02722	CC02740	CC02758	CC02776	CC02794	CC02800	CC28124	-	CC31072	2300	2350	2,88	1150	3312	<b>2320</b>
CC02724	CC02742	CC02760	CC02806	CC02778	CC02802	CC28126	-	CC31074	2300	2580	3,14	1000	3140	<b>2715</b>
CC02726	CC02744	CC02762	CC02808	CC02780	CC02804	CC28128	-	CC31076	2450	2750	3,36	1000	3360	<b>2860</b>

\* These buckets also fit CAT and Deutz machines

\*\* Manitou / Merlo ZM2 gross price € 1100

\*\*\* Merlo ZM3 is gross price + € 150 for the medium load capacity buckets and + € 100 for the heavy load capacity buckets

\* Latest additions

RRP = Recommended resale price

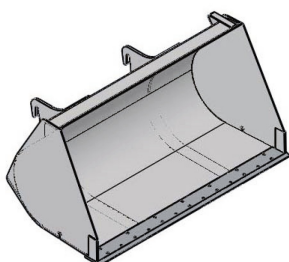
### Options

	REF
Double blade 500 HB	
L=2450 mm - 8 holes	CC04744
L=2300 mm - 8 holes	CC04746
L=2100 mm - 7 holes	CC04748
L=1900 mm - 6 holes	CC04750

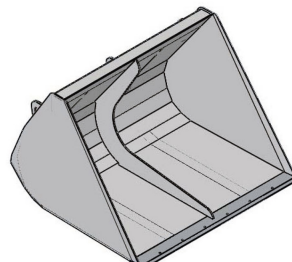
### Available on request

- > Adapter for boom and video camera
- > Blades
- > Teeth for buckets with 500 & 900 l volumes
- > Camera to mount on bucket (REF 151TA2974)

### 500 l - 1160 l • Digging bucket



### 1930 l - 2350 l • General bucket



### 2380 l - 2750 l • General bucket

